

Installation Manual

Oasis Luxury Steam Shower

L60" X W40" X H88"



Safety notice

1. The electrical installation should be performed by a qualified technician or professional.
2. The power supply should match the electric parameter of the product, certified GFCI Circuit . distance among outlets $\geq 3\text{mm}$.
3. Cutting any wire on this product is strictly prohibited in the process of handling installation. Do not take apart computer control box, control panel or remote control, or warranty will be void.
4. Before using, check whether power is sufficient? Whether control faucet is open.
5. Avoid Organic liquid like Acetone, ammonia, petrol and vitriol chemicals that will blemish the acrylic surface and plated parts.

Advice:

1. Pay attention to high temperatures to prevent burns when using the steam shower.
2. Person that are intoxicated, hypertensive, asthmatic, or have heart disease should avoid prolonged use of the steam shower.
3. Children should be accompanied with adult when using the steam shower.
4. close the door and do not enter the steam shower when the sterilization is on.
5. The massage bath tub can not be filled while using the steam shower.
6. Don't forget to cut water supply and power supply after each use.
7. Unit must be properly grounded.
8. Outdoor use is not allowed.

Warning:

Users must operate according to the Safety Notice and installation requirements otherwise, personal injury may occur

The manufacturer reserves the right to modify this unit and technical parameters at any time .

Technical parameter

Product Features - Standard Configuration

Function and device	
Steam cleaning function	
Water Inlet (Tub)	
Waterfall Inlet	
Under-water lamp	
Surf	
Manual drainer	
Drainer	●
Steam Generator protection	●
Top light	●
Sliding handle shower	●
Top shower	●
Time setting	●
Temperature setting	●
Temperature detector	●
Acupuncture massage	●
Multi-function shower	●
Hydraulic pressure adjustor	●
Cold / Hot Water Switch	●
Telephone answer	●
Bluetooth	●
FM Radio	●
Steam bath	●
Ozone sterilization	●
Exhaust Fans	●
Control Panel	●
MODEL	WG-U972

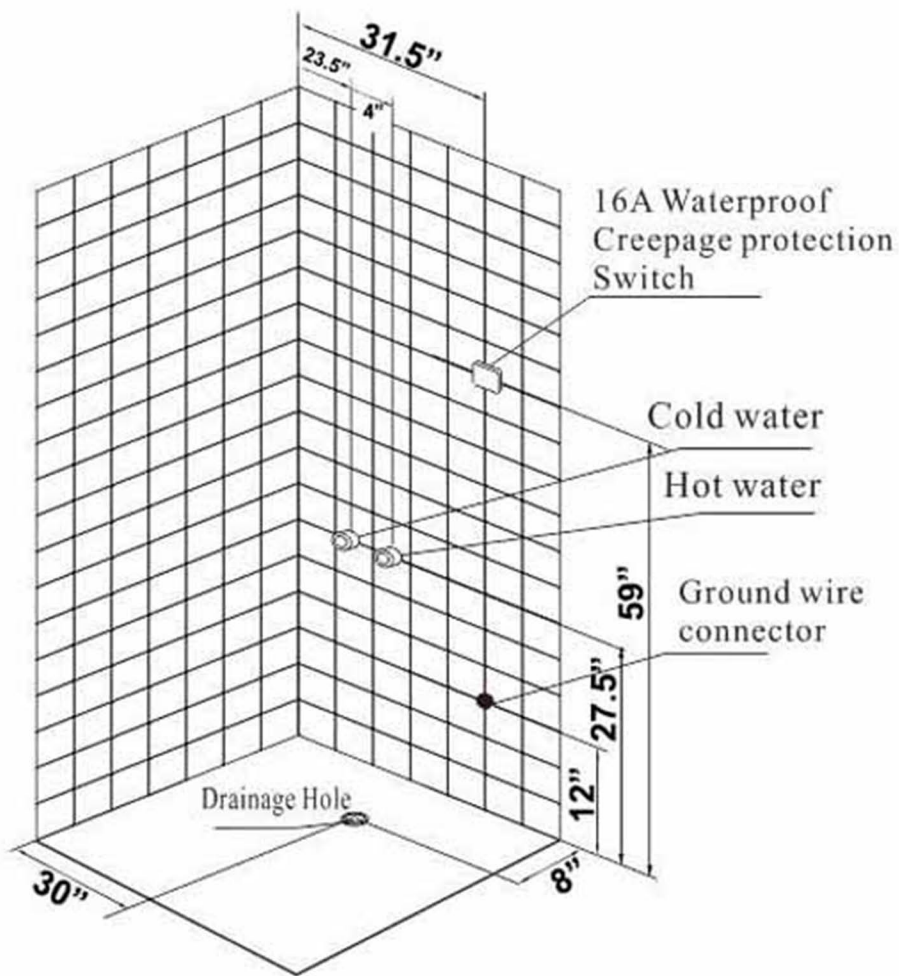
Electric Parameter:

Model	Size(mm)	Electrical source voltage (V)	Rated Power (Hz)	Rated current (A)	Steam generator (W)	Pump (W)	Blower (W)
WG-U972	1515X1015X2250	220-240	50-60	≈16	3550		

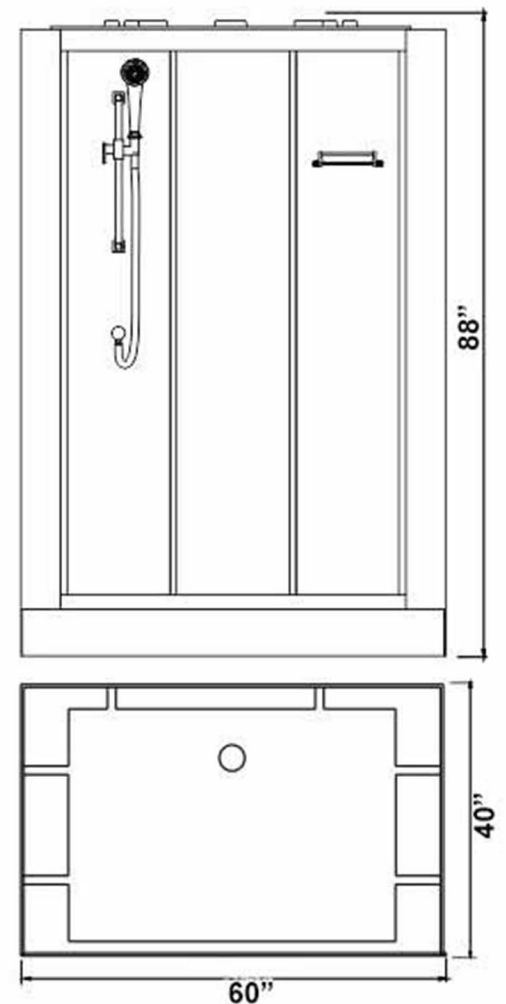
The information of this table are only reference, the company have right to amend the technique parameter、specification、model、collocate before any advance inform, the detail please inquire about dealer.

Water Parameter:

Work hydraulic pressure	Current capacity	Diameter of drainer	
Mpa	L/min	Cold/hot water	Drainer
0.2-0.4	8-12	DN15	DN40



Three-dimensional Installation Dimension Drawing



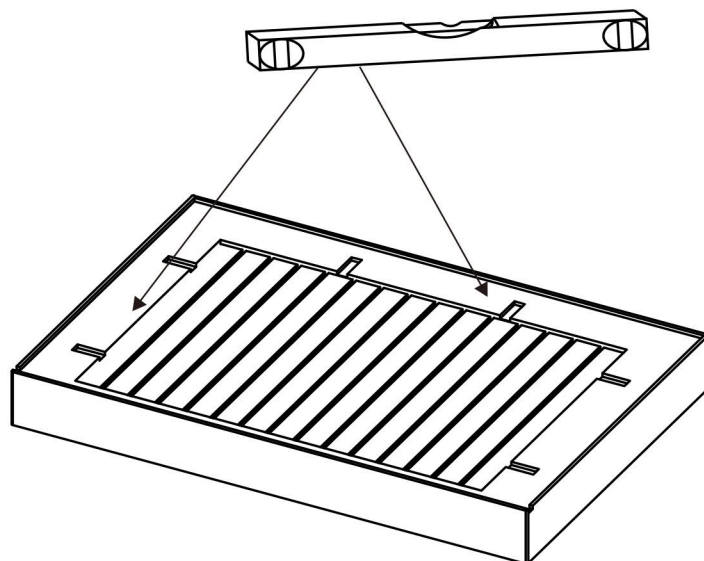
Plane Dimension Drawing

1. Water Supply: One Cold and one Hot pipe. Shut-off Valve with outside Yoke (DN15(G1/2)) shall be mounted on the wall which should be ' **27.5"** ' above from the ground. 0.15mPa=Pressure=0.4mPa.
2. The steamer power: 3550W. Power supply voltage: AC230V \pm 10%. Frequency: 50Hz. Single Phase and Three Wire System with 3X4mm² rubber-insulated copper wire which is independent loop. The steamer is mounted with the Creepage Overload Protection device and must have the reliable ground wire.
3. Water Drainage: The floor drainage hole should be the same or bigger than DN50, and should be on a line with the ground.

Installation steps

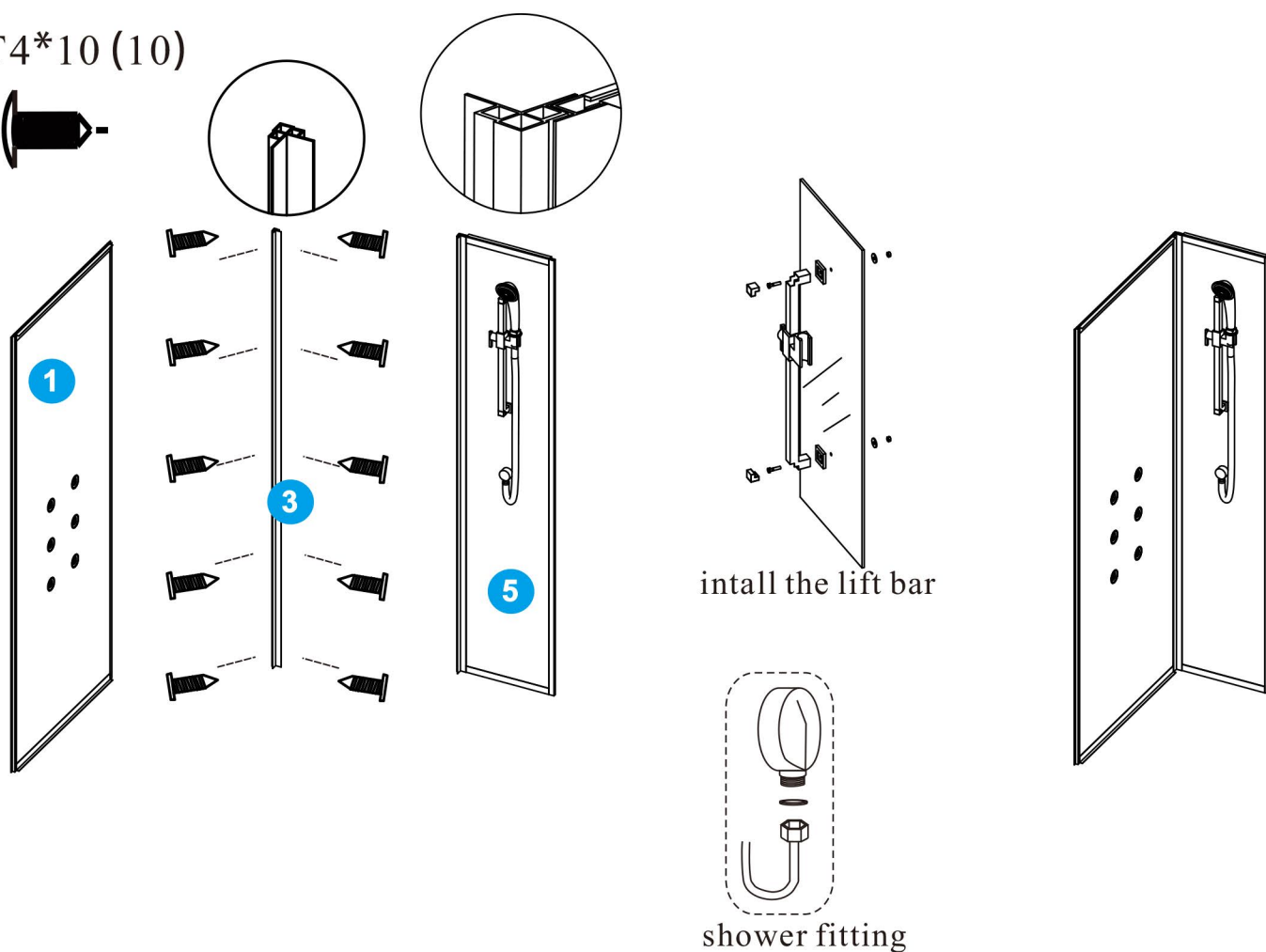
1. Install tray

Open the package, put the tray on the appropriate place. Use the level ruler test all direction is balance. Adjust the screw which in foot to the tub until level, and then screw down the nut. The feet must adhere to the ground.



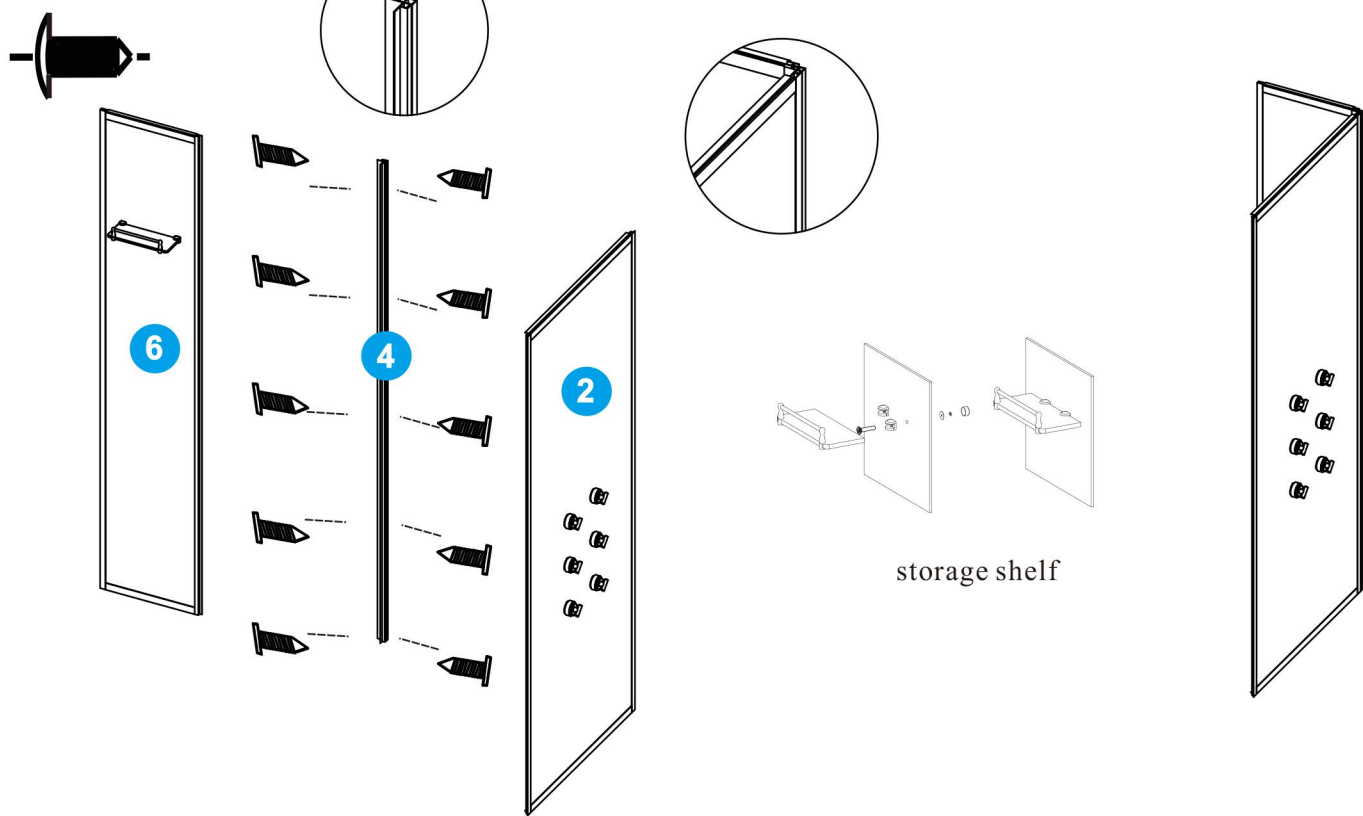
2. use St4x10 screws to join the part 1, part 3 and part 5
need to install the shower pole and handheld shower to part 5

ST4*10 (10)



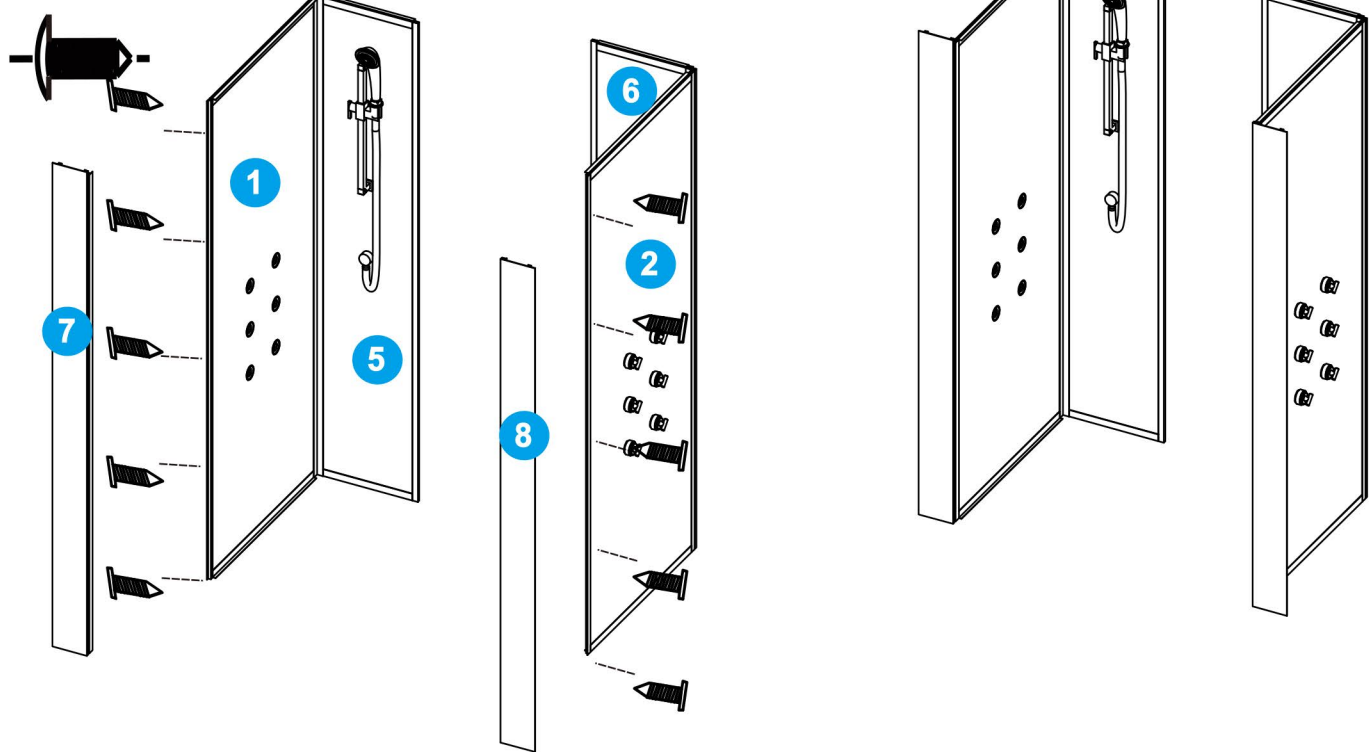
3. use St4x10 screws to join the parts 2 ,parts 4 and parts 6,and then intall the shelf to the parts 6

ST4*10 (10)



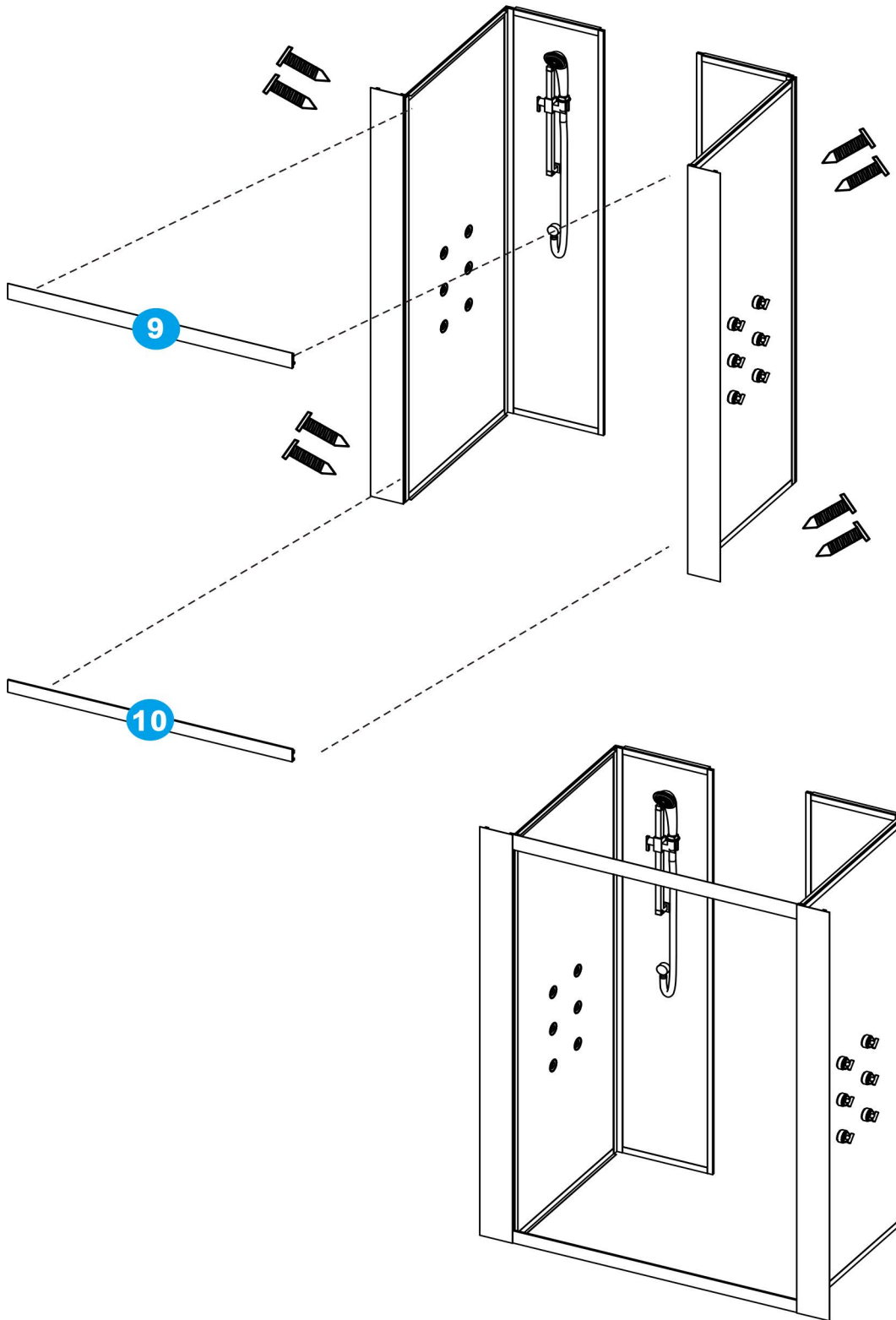
4.use St4x10 to join the parts 7 and parts8 ,and then join the parts(step 2 and step 3)

ST4*10 (10)

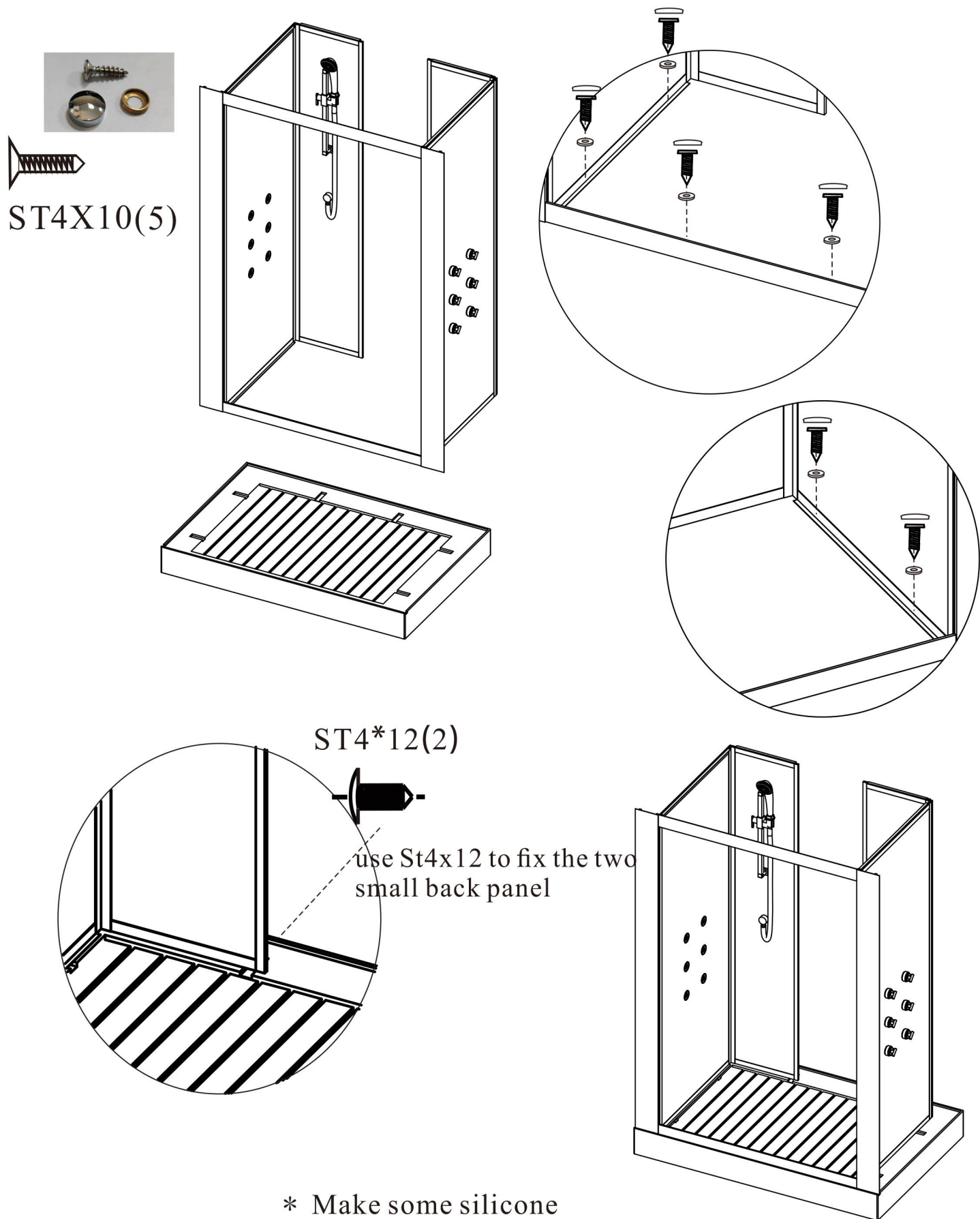


5. use St4x30 screws to join the parts 9 and parts 10

ST4*25 (8)



6. put the parts (were installed by above steps) on the tray, and then use St4x10 screws to fix, last fix with the decorative cover inside, no need decorative tap outside parts



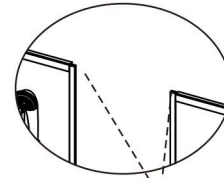
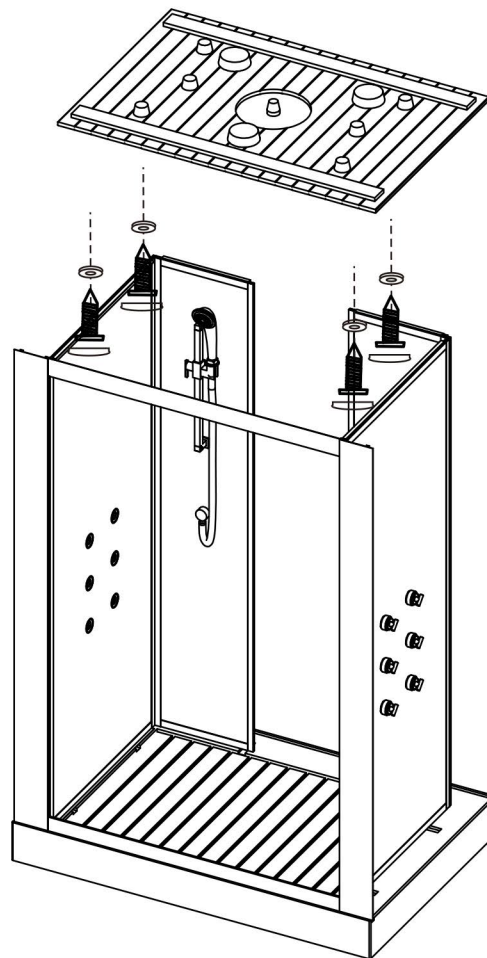
* Make some silicone to prevent leaking under the high water pressure .

7.put the top on the room,according the holes of aluminum to drill the $\varnothing 3$ holes on the top,and then use screws to fix



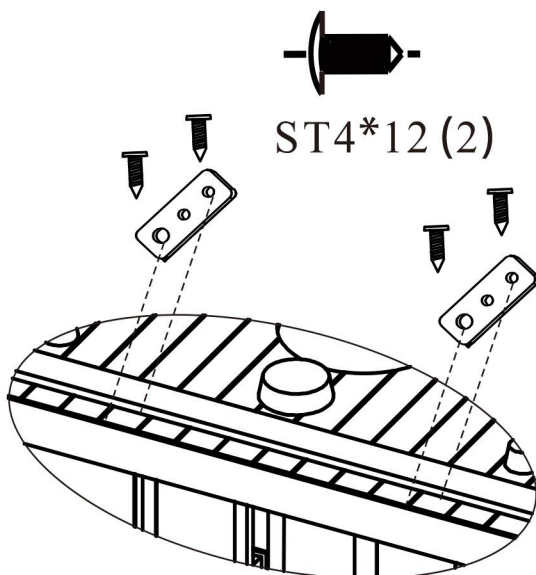
ST4X10(5)

fix it with decorative cover
inside of the steam room

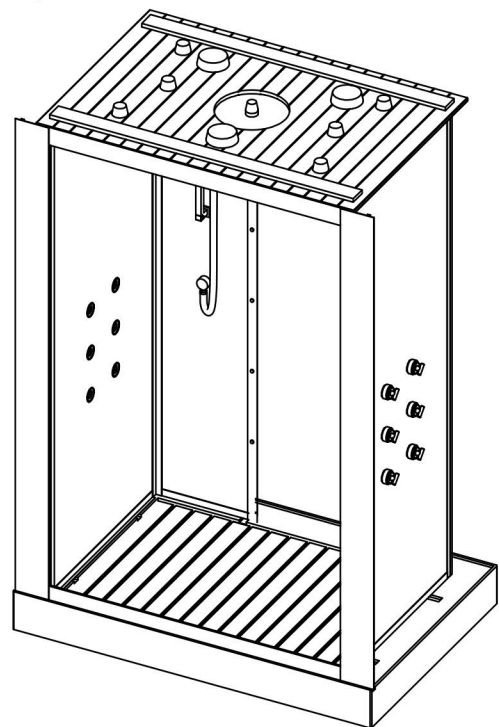


ST4*10(2)

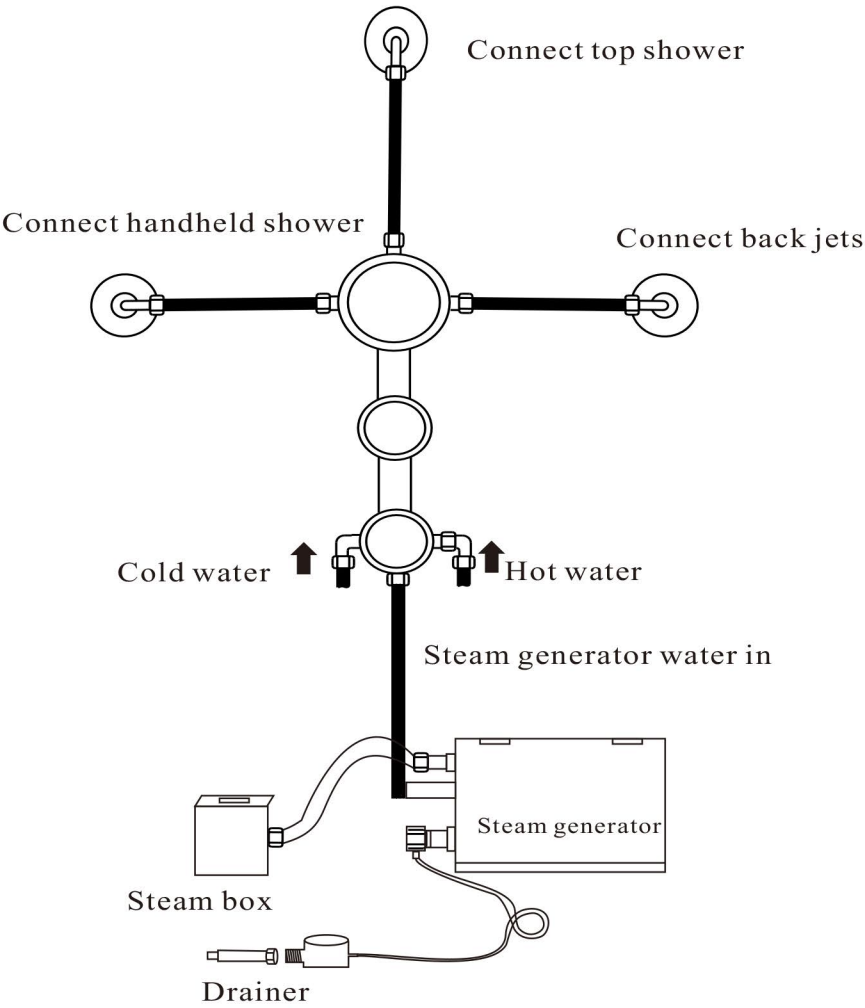
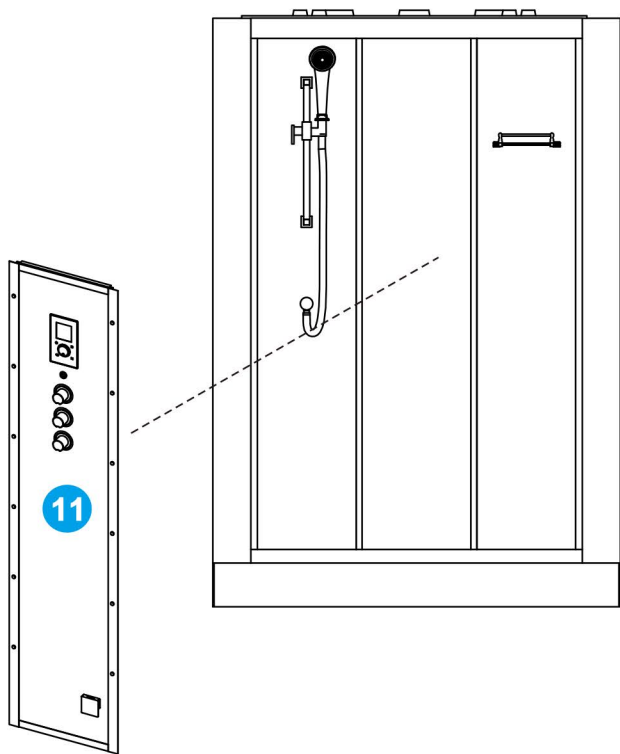
use St4x12 to fix the
two small back panels



ST4*12 (2)

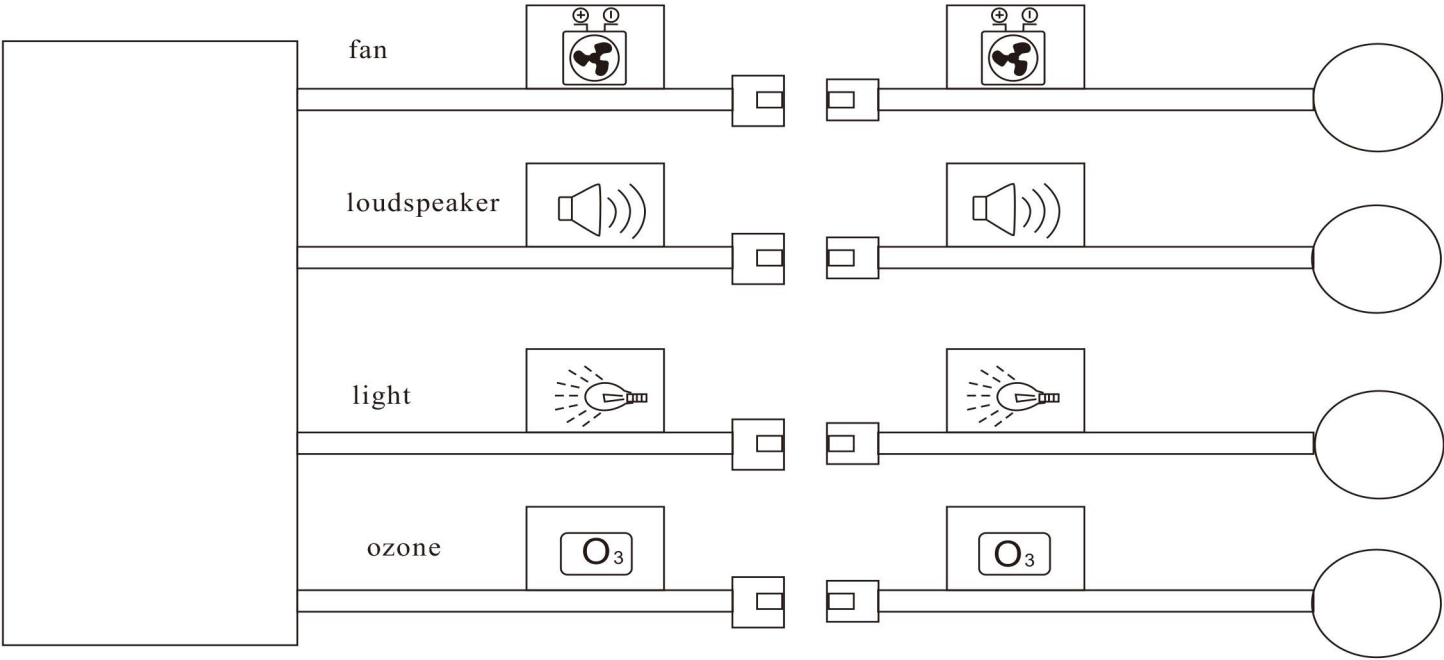


8. connect all of the water pipe and wires, and then fix with the ST 4x10 screws and decorative cover



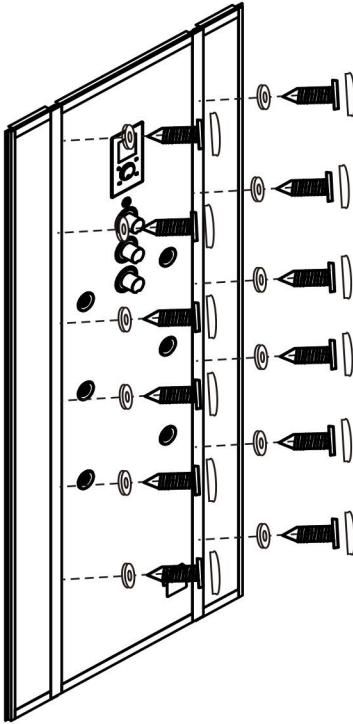
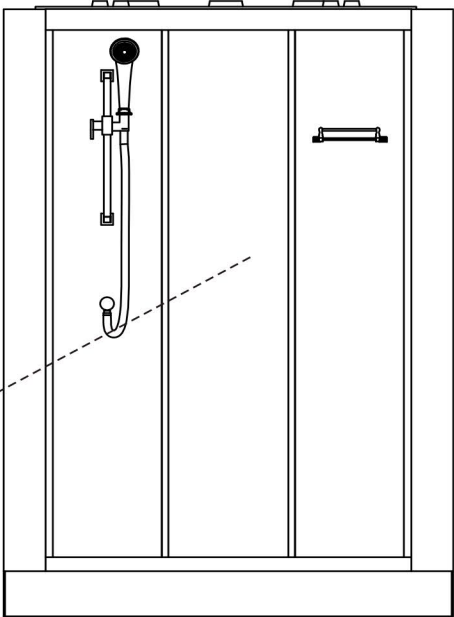
Hose diagram

Connect the wire to control box, fan to fan ,light to light, loudspeaker to loudspeaker.
ozone to ozone



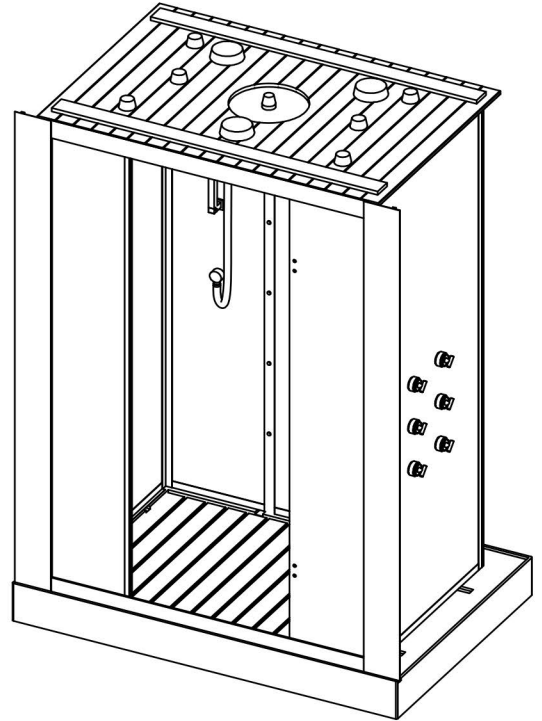
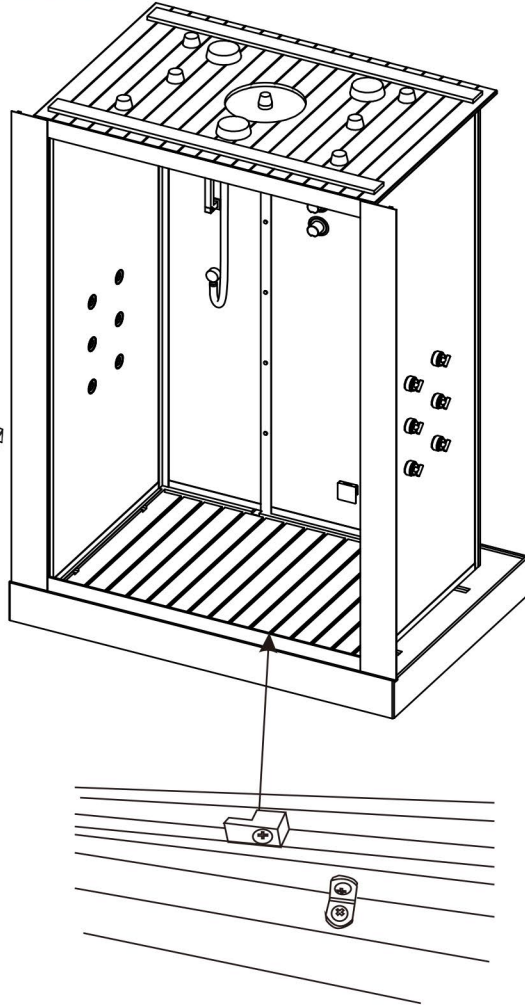
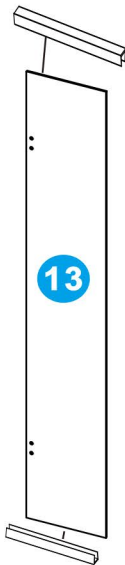
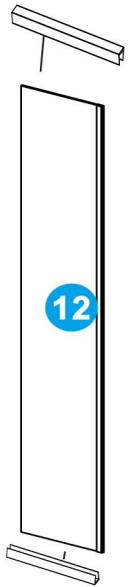
ST4X10(10)

fix it with decorative cover
inside of the steam room

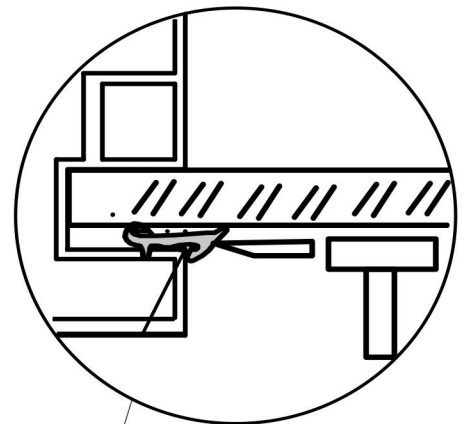
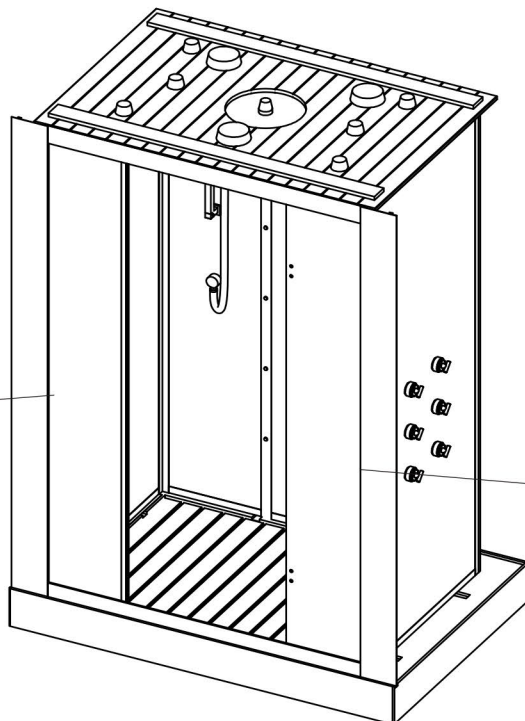
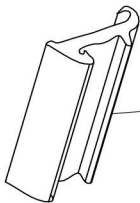


install parts 12 and parts 13
put the U shape rubber onto the bottom and top of the glass 8 and 9,
use 4x20mm self-tapping screws to top and bottom of fix the front frame,
loosen the fixture of the al. profile for parts 9, put the glass at the back of the front
frame, and then use the fixture to fix

U Seal



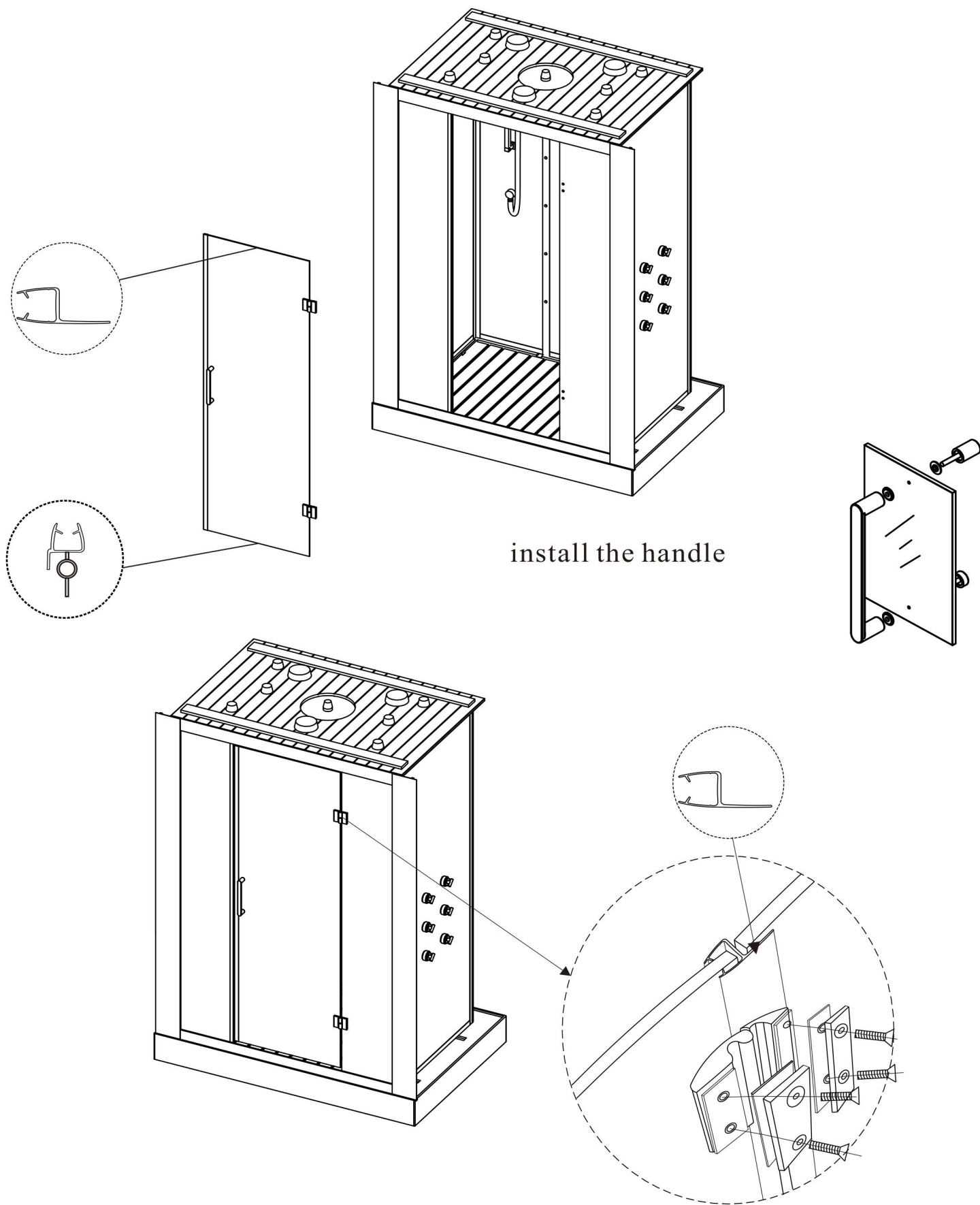
ST4X20 (2)



single side seal



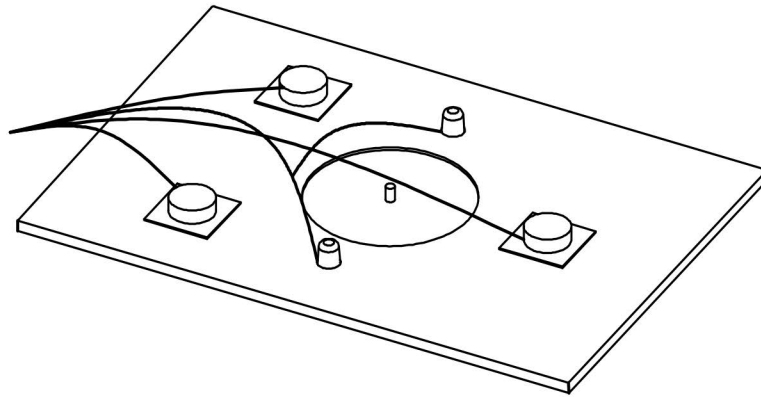
install the glass door, rubber, hinges and handles



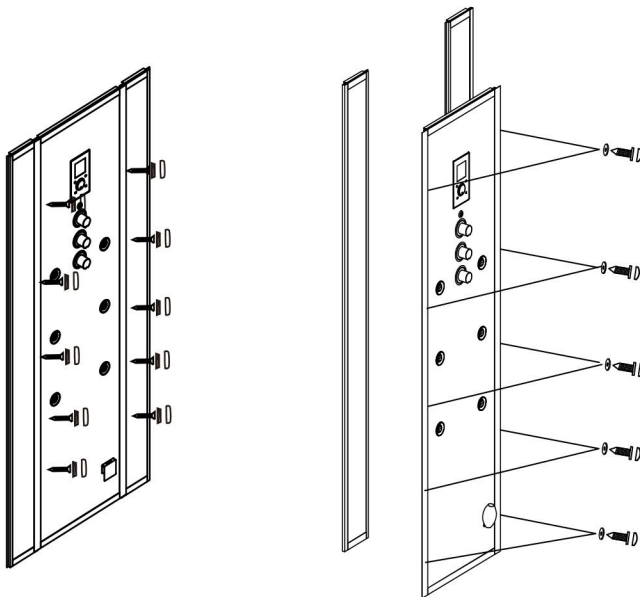
Repair/ replace:

It must work by qualified wireman or the assigned professional from the reseller , strictly according the" safety precautions",must cut off the electricity and water before repair and correct procedures.

1.loosen the link of head shower ,fan,light,speaker,ozone of roof. twist the screw of roof and backboard , make them seperately.



2.twist the screw of backboard,take out the backboard gently.



ST4*10
decorative cap

3.repair / replace

4.must assemble and test before use